



TrackTreads

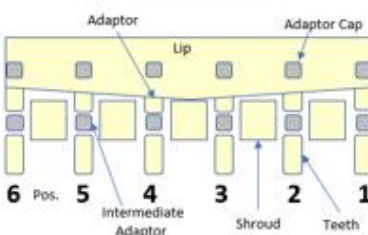
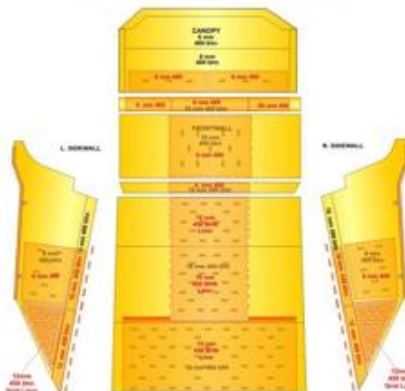
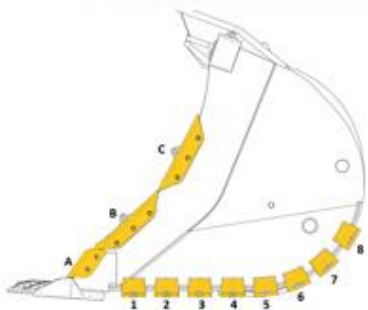
Wear Technology Solutions

Delivering technology solutions in Mining for Undercarriage and Wear Parts



GET and Wear Surfaces are fast wearing components

TrackTreads technology solutions, enable inspection and tracking of GET, Pivot Point Pins and Wear Surfaces found on Buckets, Trays, Blades, Crushers, and any type of wear surface. The system uses 2 platforms: **mobile device** for field data collection, and a **web application** for analysing and managing the data, reporting and other tasks.



A complete solution for managing assets from cradle to grave

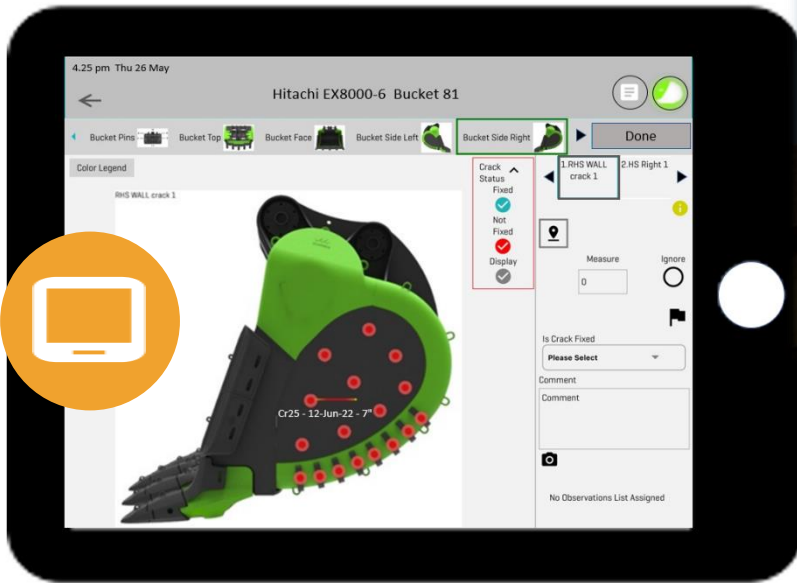
- Measure Material thickness and wear measurements
- Record Physical observations
- Enter GET and component replacements
- Identify Cracks, measure, and map propagation rates
- Quantify Pivot Pin and Bush wear



TrackTreads

Field Data collection

A Mobile app in both IOS and Android versions, capable of holding multiple inspections for the day's work, while collecting field inspection observations remotely:



- **Physical observations** of point
- **Measurement** of tooth length or other GET measurements
- **Measuring Pin and Bush** interference wear
- **Ultrasonic thickness** measurements of

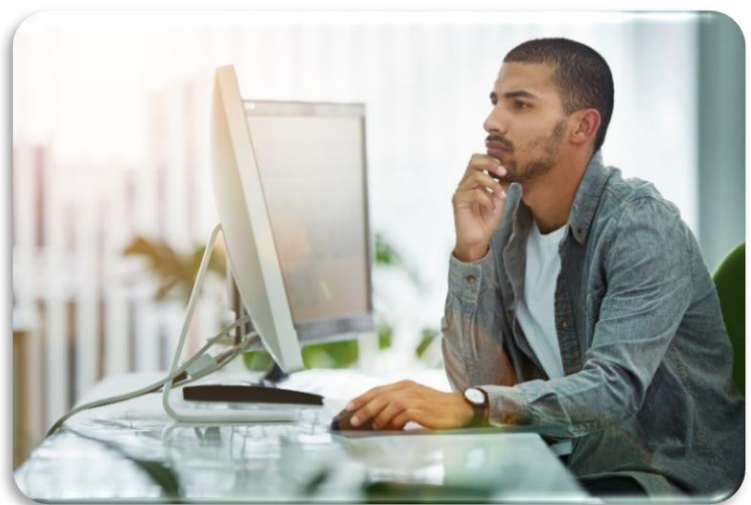
wear plates thickness and asset wall thickness

-
- Recording **images** of observation points for later reference
- **Comments** to support observations
- **Flags** to highlight irregularities to supervisors for immediate attention
- **Replacements** of GET components
- Identify and measure new **cracks** with crack length and images to support. Allocate a severity level
- **Existing cracks** can be remeasured to extend length of fixed
- **Sync data** directly through mobile **network** or **WIFI**

Data analysis and actioning

The web application that keeps track of all inspections and repairs and allows the analysis of the data before issuing of a PDF report. Repairs, replacements and rebuilds can be recorded while keeping a complete audit trail in the event log

- **Review Inspection data**, % worn, Hours on component and residual life calculation
- **Images, and comments** assist with formulating **recommendations** of future repairs
- **Remaining life and date of rebuild** forecasted automatically
- **Perform repairs** of components noting downtime and repair costs by labour, parts, and miscellaneous costs.





TrackTreads



Rebuild asset at end of life recording all costs, Hours and other costs. Record components replaced. Re-commence new cycle.

- **Full owning and operating cost** audit trail across each cycle.
- Record **tonnes, BCM's and hours** on asset to enable cost per hour, cost per BCM, Cost per Tonne
- **Move assets to inventory** from equipment to complete repairs or rebuilds, then place asset on different equipment. All locations

are tracked for each asset.

- **Review all inspections** for an asset in **tabular** format including Repairs and replacement of components
- Print off **PDF report** to provide to customer and management reporting

Crack management

A complete **register of all cracks** for the asset with a full history showing each crack, propagation rates and when fixed.

- **Review crack inspection** data, measured length, % worn, maximum allowable length, images, residual life, crack **propagation rate**
- Complete **crack repair** by welding, recording costs and labour hours
- Full **audit trail** of crack history.



Dashboards



Dashboards provide a **complete overview of fleet condition** along with **forecasted action dates**. Detailed data for each asset can be viewed by drilling to the detail on separate screens.

- View all assets in inventory or on Equipment
- View historical locations of assets
- View a crack summary with statistics across all equipment- and drill to the detail of each equipment. View total number of cracks, which components most affected, and total crack length

API and Other features

- Track **Warranty status** with end date or remaining hours before expiry
- Store documents in the **document library** for each asset covering, Installation instructions, welding specifications and any other pertinent documents
- **Product Improvement Programs (PIP)** can be set for assets to track which assets have been completed
- **Standard API's** allow the extraction of any data for further analysis, opening of work orders and planning.